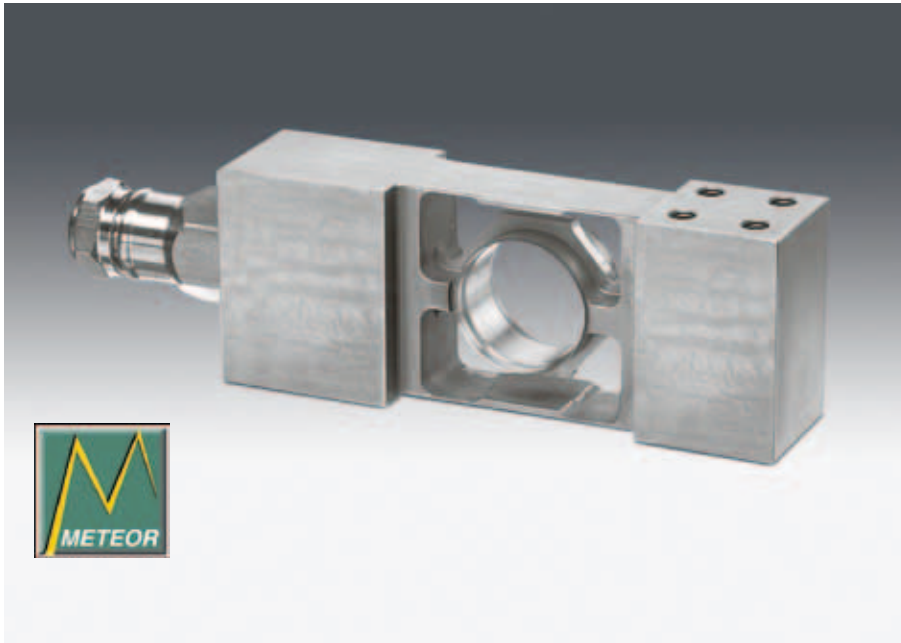


## MP 55 Stainless Steel Single Point Load Cell



### 11 kg ... 200 kg Type C3MR+

- Full stainless steel construction
- Hermetically welded seal (IP68, IP69K)
- Approved to OIML R60
- Ex-Version available (MP55/...E)
- High Input Impedance
- Single Point platform (max. size see table)
- Integrated Mounting spacer

### Applications

- Bench Scales
- Counting Scales
- Check Weighing Systems

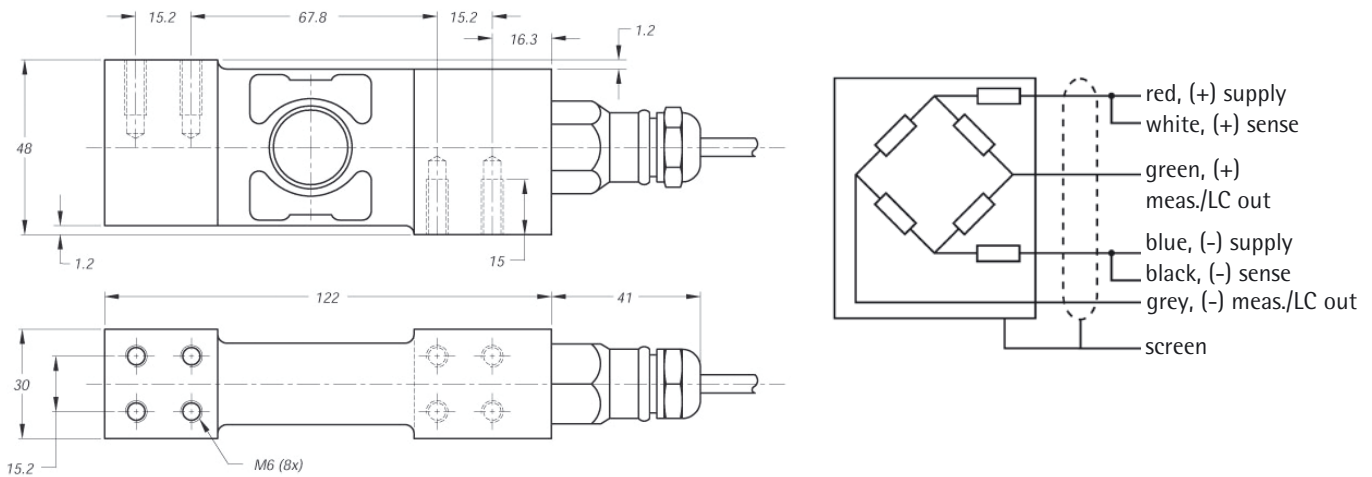
Technical Data		C3MR+	
Accuracy class		0.02	% $E_{max}$
Maximum capacity	$E_{max}$	s. table	
Max. usable load	$E_u$	200	% $E_{max}$
Destructive load	$E_d$	> 300	% $E_{max}$
Safe side load	$E_{lq}$	100	% $E_{max}$
Minimum LC verification interval $v_{min} = E_{max}/Y$	Y	20,000   22,000 (11 kg; 2.2 kg) 22 kg	
Rated output	$C_n$	2.0   2.2 (11 kg; 22 kg)	mV/V
Tolerance on rated output	$d_c$	≤ 5.0	% $C_n$
Zero output signal	$S_{min}$	≤ 5.0	% $C_n$
Creep, during 30 min.	$d_{cr}$	≤ 0.016	% $C_n$
Temperature effect on $S_{min}$	$TK_{S_{min}}$	≤ 0.006	% $C_n/10K$
Temperature effect on C	$TK_C$	≤ 0.010	% $C_n/10K$
Input impedance	$R_{ic}$	1100 ± 50	Ω
Output impedance	$R_o$	960 ± 50	Ω
Insulation impedance	$R_{is}$	> 5,000	MΩ
Recommended supply voltage	$B_u$	5 ... 15	V
Maximum supply voltage	$U_{max}$	15	V

## Technical Data

## C3MR+

Nominal ambient temperature range	$B_T$	-10 ... +40	°C
Usable ambient temperature range	$B_{TU}$	-40 ... +80	°C
Nominal deflection	$S_{nom}$	0.17 (11 kg) ... 0.25 (200 kg)	mm
Cable length		3.5	m
Environmental protection		IP68, IP69K	

The technical data given here serve only as a product description and must not be interpreted as guaranteed characteristics in the legal sense.



## Order information

Type	Order number	Type	Order number	Max. capacity $E_{max}$	Max. platform size
MP 55/11kgC3MR+	9408 255 08011	MP 55/11kgC3MR+E	9408 655 08011	11 kg	350 mm × 350 mm
MP 55/22kgC3MR+	9408 255 08022	MP 55/22kgC3MR+E	9408 655 08022	22 kg	350 mm × 350 mm
MP 55/50kgC3MR+	9408 255 08050	MP 55/50kgC3MR+E	9408 655 08050	50 kg	450 mm × 450 mm
MP 55/100kgC3MR+	9408 255 08110	MP 55/100kgC3MR+E	9408 655 08110	100 kg	600 mm × 600 mm
MP 55/200kgC3MR+	9408 255 08120	MP 55/200kgC3MR+E	9408 655 08120	200 kg	600 mm × 600 mm

## Certificate of conformity

### MP 55 (optional)

Ex-Zone 2, 22  
II 3G Ex nA II T6  
II 3D Ex tD A22 IP65 T85°C

### MP 55/..E

Ex-Zone 0, 1, 20, 21  
II 1G Ex ia IIC T6|T5 Ga  
II 1D Ex ia IIIC IP67 T100°C